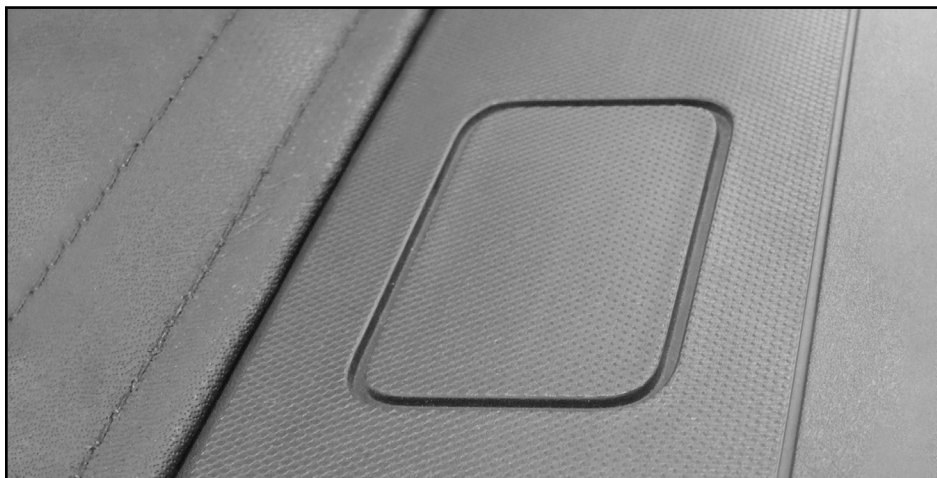


# TRUCK BED RACK SPECIAL STAKE POCKET INSTRUCTIONS



## **2014-ON CHEVY/GMC 1500, 2015-ON CHEVY/GMC 2500, 3500 & 2015-2022 CHEVY COLORADO/GMC CANYON**

Use these instructions to locate and trim stake pockets to prepare them for truck bed rack clamping hardware.

**NOTICE TO INSTALLER:** Even if familiar with product, read instructions prior to installation as improvements may be made without notice. Always handle components with care. When done, these instructions must be given to the consumer.

**NOTICE TO CONSUMER:** Before using this product, read these instructions. Save these instructions for future reference.

# PREPARATION

## TOOLS NEEDED

- Protective eyewear
- Utility knife
- Ratchet with 9/16" socket
- 9/16" Wrench

**NOTE:** Hardware appearance and components may vary.

**NOTE:** Box or stake pocket appearance may vary.

**NOTE:** 1-7/8" brackets are for front stake pockets and middle stake pockets if present. 2" brackets are for rear stake pockets.

**⚠ CAUTION:** Over tightening hardware may damage components.

## SAFETY INFORMATION

- Always exercise caution when using a utility knife.
- Always cut away from yourself and others.

**NOTE:** Check if your vehicle has removable stake pocket covers before proceeding.

## 1: PREPARING RAILS

A. Refer to Step 1 in the standard instructions to prepare rails.

## 2: PREPARING FRONT STAKE POCKET

A. Using a utility knife, carefully cut out front stake pocket and remove plastic piece.

**NOTE:** If middle stake pocket is present repeat Step 2A.



## 2: PREPARING FRONT STAKE POCKET (Continued)

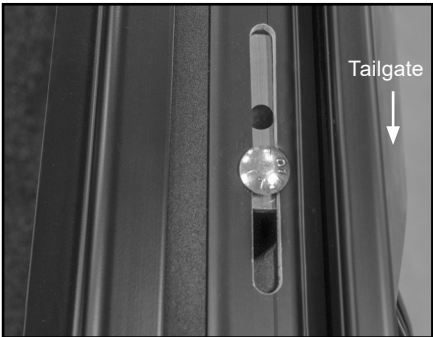
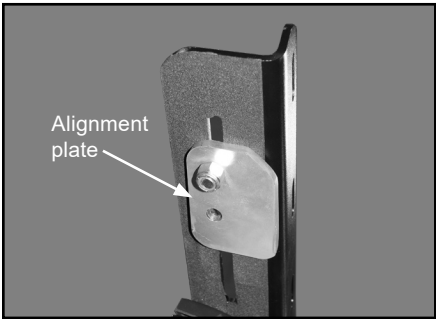
B. Place foam into front stake pocket.



## 3: INSTALLING RAIL

A. Orient alignment plate with rear stake pocket. Secure to bottom of rack rail with carriage bolt and lock nuts in hole closest to tailgate.

**NOTE:** Do not tighten completely, alignment plate should be able to slide along rack rail.

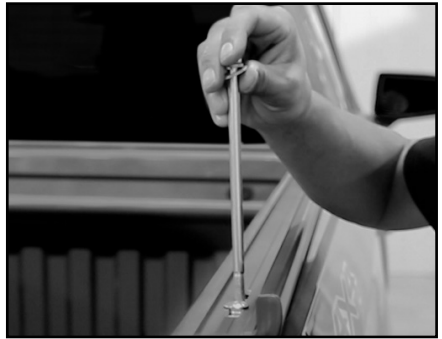


B. Place rack rail on bed rail with alignment plate in rear stake pocket.



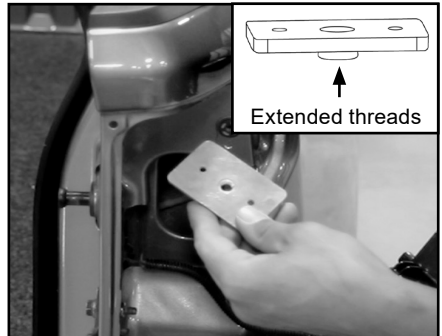
### 3: INSTALLING RAIL (Continued)

C. Place long bolt with lock and flat washer through remaining hole in alignment plate and through hole in bottom of stake pocket.



D. Remove rear taillight assembly and place clamp plate underneath stake pocket.

**IMPORTANT:** Ensure extended threads on clamp plate are toward box floor.



E. Thread long bolt into clamp plate.



F. Tighten long bolt from top of rack rail.

G. Refer to standard instructions to install rack rail to front stake pocket.

**NOTE:** If middle stake pocket is present refer to standard instructions to install rack rail.

H. Repeat Steps 2-3 to install rack rail on opposite side.

**I. For remaining rack installation, refer to standard instructions.**

