

# Semi/Trailer Wiring Kit

## Special Installation Instructions for 40 Amp Kits (PN 80108) and 50 Amp Kits (PN 90139)

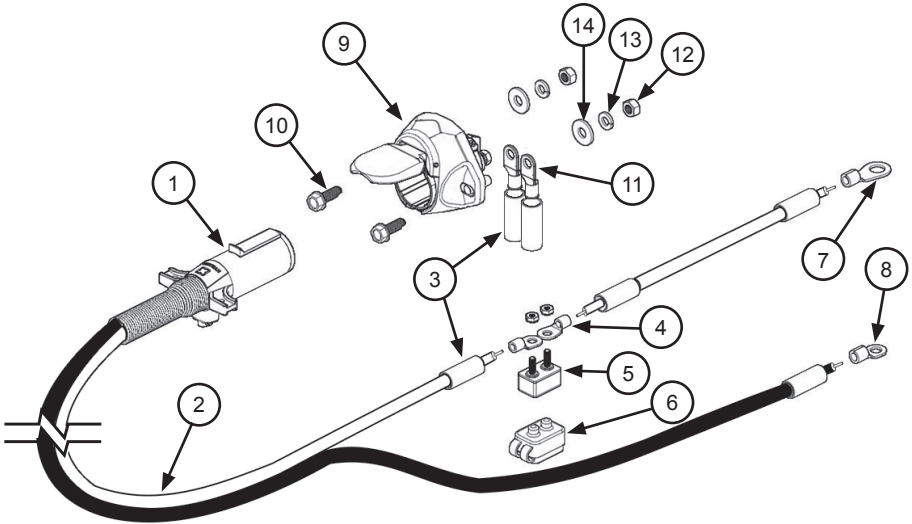
**INSTALLER:** These instructions must be given to the consumer.

**CONSUMER:** Save this manual for future reference.

**READ AND FOLLOW THESE INSTRUCTIONS CAREFULLY BEFORE  
INSTALLING.**

Actual parts may vary from those shown in this booklet.

# Parts Diagram



## Part Numbers and Descriptions

The following items are included in Part Numbers 80108 and 90139		
	80142	Wire Assembly (Includes 1-8) (for 80108)
	90133	Wire Assembly (Includes 1-8) (for 90139)
1	20048	Dual Pole Plug (200 Amp.)(Plug Only)
2	20046	Wire, 6 Ga. 2 Strand
3	30650	Heat Shrink
4	30647	Eyelet Terminal Ring 6 Ga. #10 (for Automatic Breaker)
5	10739	Circuit Breaker, Automatic 12V 40A (for 80108)
	80285	Circuit Breaker, Automatic 12V 50A (for 90139)
6	30648	Breaker Cover, Red
7	30314	Eyelet Terminal Ring 6 Ga. 1/2" for Battery Post (+)
8	30313	Eyelet Terminal Ring 6 Ga. 3/8" for Battery Post (-)
9	70388	Dual Pole Socket w/ Cover (200 Amp.)(includes heat shrink and connectors)
10	60455	Bolt, Hex Flange 5/16" x 1" Zinc Plated
11	60598	Terminal Ring, 1/4" 4 Ga.
12	10181	Nut, 5/16" Hex, Zinc Plated
13	20788	Washer, Lock 5/16" Zinc Plated
14	10189	Washer, Flat 5/16" Zinc Plated
	80146	Rubber Grommet (Not Shown)

# 1: INSTALLATION PROCESS

A. Dual Pole Connector: Mount plug connector to suitable location on semi-tractor, adjacent to existing plugs. Mount socket to suitable location on trailer.

B. Select best routing for heavy gauge wire along frame toward cab near existing wiring harness and up to the battery. Install circuit breaker in line on red (+) positive wire close to battery using 1/4" ring terminals and heat shrink.

C. Prep end of heavy black wire for battery (-) negative post with heat shrink tube and 3/8" terminal. Prep end of heavy red wire for battery (+) positive post with heat shrink tube and 1/2" ring terminal.

