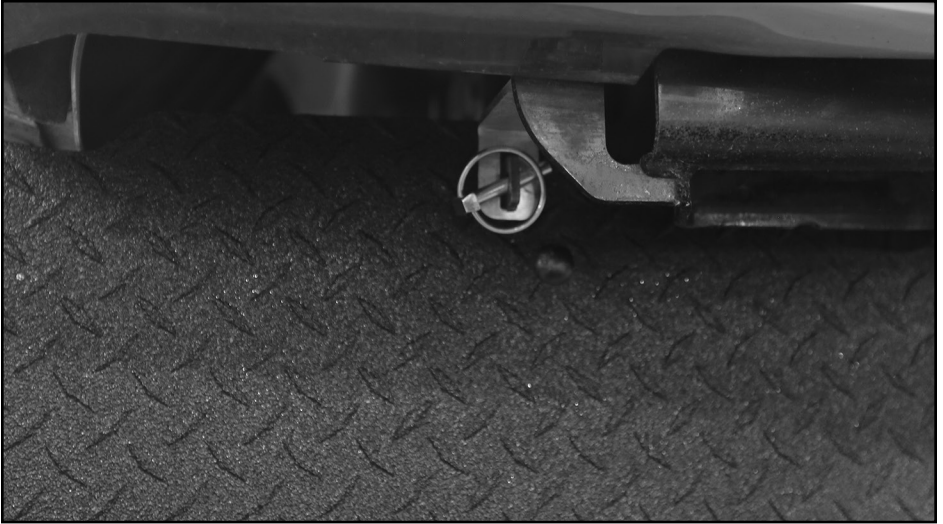


FULL WIDTH TOW FLAP SPECIAL BRACKET INSTRUCTIONS



2018-ON FORD EXPEDITION

Read and follow these special instructions along with the standard instructions carefully before installing or using this tow flap.

NOTICE TO INSTALLER: Even if familiar with product, read special instructions prior to installation as improvements may be made without notice. Always handle components with care. When done, these instructions must be given to the consumer.

NOTICE TO CONSUMER: Before using this product, read special instructions. Save these special instructions for future reference.

PREPARATION

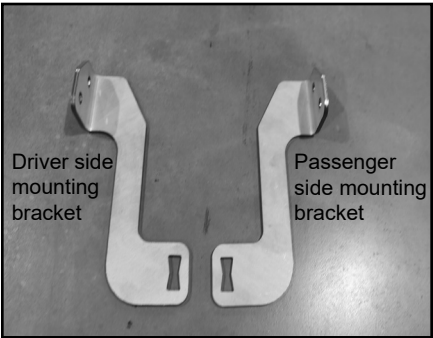
TOOLS NEEDED

- Ratchet with 9/16" socket
- Protective eyewear

⚠ CAUTION: Over tightening hardware may damage components or truck.

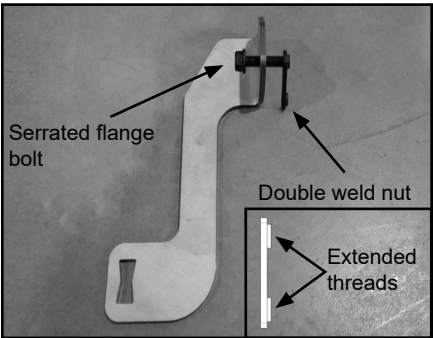
1: INSTALLING MOUNTING BRACKETS

NOTE: Use proper orientation while installing brackets.

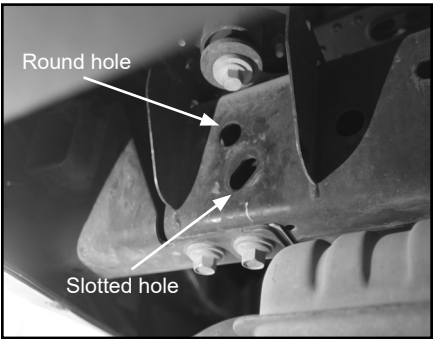


A. Insert serrated flange bolt through lower hole at top of mounting bracket, then thread into double weld nut. Do not fully tighten.

IMPORTANT: Ensure extended threads on double weld nut face away from serrated flange bolt.



B. At rear, behind tire, locate round and slotted holes in frame.



1: INSTALLING MOUNTING BRACKETS (Continued)

C. Lift mounting bracket into place, then slide double weld nut into slotted hole.



D. Thread second serrated flange bolt into double weld nut through upper hole at top of mounting bracket and round hole in frame. Do not fully tighten.

NOTE: Serrated flange bolts will be fully tightened during tow flap installation.

TIP: Control double weld nut by turning first serrated flange bolt until double weld nut is lined up for second serrated flange bolt.

E. Repeat Steps 1A-D to install mounting bracket on opposite side.



F. For remaining tow flap installation, refer to standard instructions.

