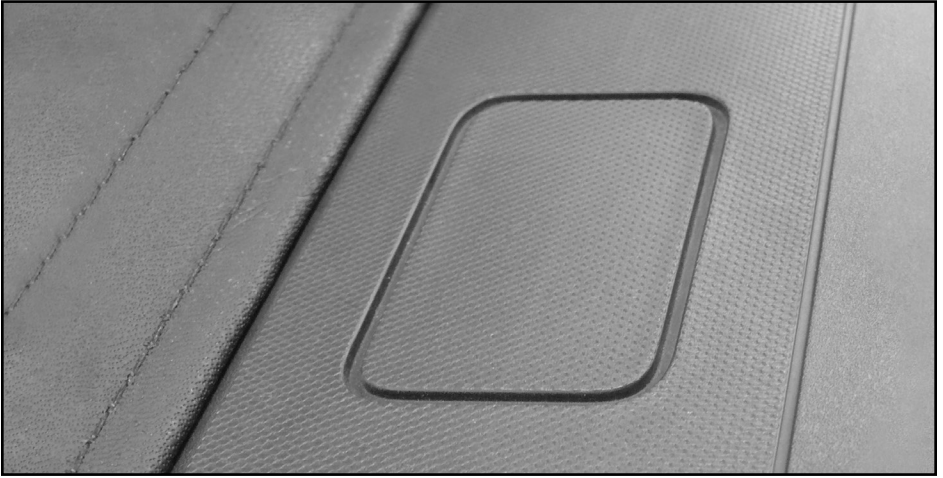


# TRUCK BED RACK SPECIAL UTILITY RAIL INSTRUCTIONS



## 2024-ON TOYOTA TACOMA

Read and follow these special instructions along with the standard instructions carefully before installing truck bed rack or rails.

**NOTICE TO INSTALLER:** Even if familiar with product, read instructions prior to installation as improvements may be made without notice. Always handle components with care. When done, these instructions must be given to the consumer.

**NOTICE TO CONSUMER:** Before using this product, read these instructions. Save these instructions for future reference.

# PREPARATION

## TOOLS NEEDED

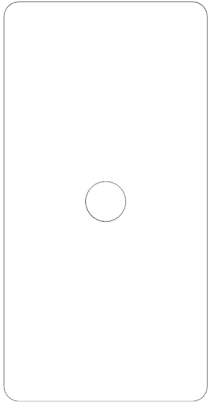
- Protective eyewear
- Ratchet with 9/16" and 10mm sockets
- Drill with 3/8" drill bit
- Cutting tool
- Marking pen
- Scissors

**NOTE:** Hardware appearance and components may vary.

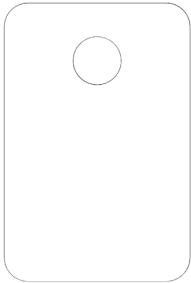
**NOTE:** Box appearance may vary.

**⚠ CAUTION:** Over tightening hardware may damage components.

**NOTE:** 5" brackets are for front stake pockets. 2.91" brackets are for rear stake pockets.



Front clamp plate



Rear clamp plate

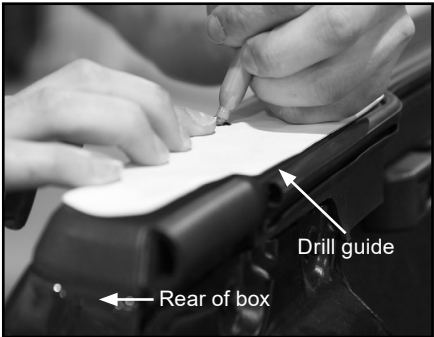
## 1: PREPARING RAILS

A. Refer to Step 1 in the standard instructions to prepare rails.

## 2: PREPARING BED CAP

A. Cut out provided drill guide, then cut out hole in drill guide.

B. On one side of box, align drill guide with bed cap at rear of box, then mark for bolt location.



## 2: PREPARING BED CAP (Continued)

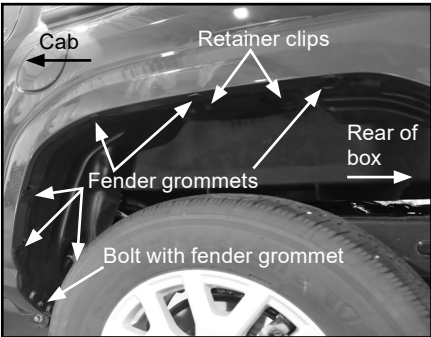
C. At marked location, drill 3/8" hole through bed cap only.



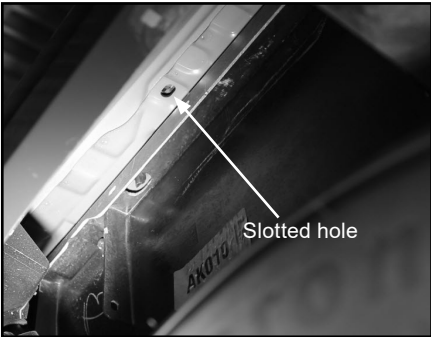
D. On side closest to cab, remove bolt with fender grommet, (6) grommets and (2) retainer clips using cutting tool. Save bolt for reinstalling wheel well liner in Step 3E.

**NOTE:** If fender flares are present, gently pull down to access outside grommets.

**NOTE:** Hardware will vary depending on truck model.



E. Pull back wheel well liner to locate slotted hole to drill through.



F. Insert drill into wheel well, then drill up through bed cap.



### 3: INSTALLING RAIL

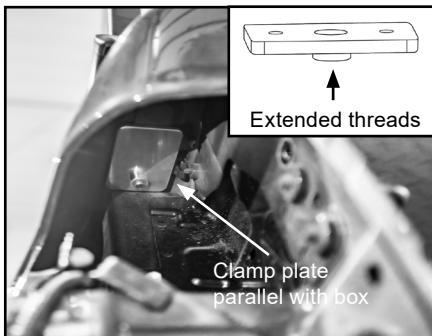
A. Place rail on bed cap, then at the rear, insert bolt with washer through slot in rail and drilled hole.



B. Remove taillight assembly and thread bolt into clamp plate ensuring short side of clamp plate is toward cab side, leaving finger tight.

**IMPORTANT: Ensure extended threads on clamp plate are toward box floor.**

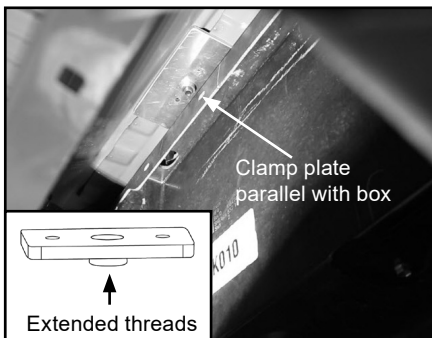
**IMPORTANT: Hold clamp plate in place parallel with box while tightening bolt to ensure clamp plate doesn't twist.**



C. At front, insert bolt through slot in rail and drilled hole, then thread bolt into clamp plate, leaving finger tight.

**IMPORTANT: Ensure extended threads on clamp plate are toward box floor.**

**IMPORTANT: Hold clamp plate in place parallel with box while tightening bolt to ensure clamp plate doesn't twist.**



D. Fully tighten bolts from top of rack rail while holding clamp plates in place.

E. Reinstall taillight, then wheel well liner using factory hardware as well as replacement fender grommets and retainer clips. Install grommets first, then bolt and retainer clips.

F. Repeat Steps 2-3 to install rack rail on opposite side.

G. For remaining rack installation, refer to standard instructions.

