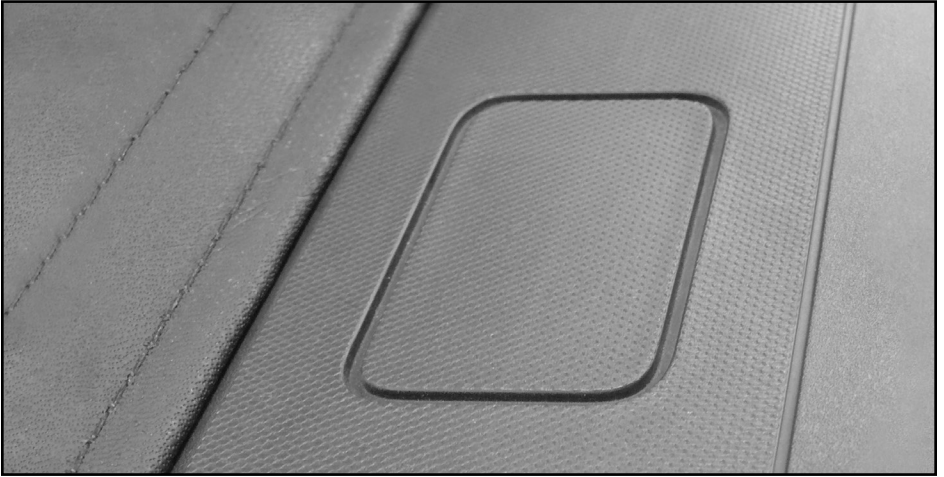


SPECIAL STAKE POCKET INSTRUCTIONS



2014-ON CHEVY/GMC 1500, 2015-ON CHEVY/GMC 2500, 3500 & 2015-ON CHEVY/GMC COLORADO/CANYON

Use these instructions to locate and trim stake pockets to prepare them for truck topper clamping hardware.

NOTICE TO INSTALLER: Even if familiar with product, read instructions prior to installation as improvements may be made without notice. Always handle components with care. When done, these instructions must be given to the consumer.

NOTICE TO CONSUMER: Before using this product, read these instructions. Save these instructions for future reference.

PREPARATION

TOOLS NEEDED

- Protective eyewear
- Utility knife
- Ratchet with 9/16" socket
- 9/16" Wrench

NOTE: Hardware appearance and components may vary.

NOTE: Box or stake pocket appearance may vary.

NOTE: 1-7/8" brackets are for front stake pockets. 2" brackets are for rear stake pockets.

SAFETY INFORMATION

- Always exercise caution when using a utility knife.
- Always cut away from yourself and others.

NOTE: Check if your vehicle has removable stake pocket covers before proceeding.

1: PREPARING FRONT STAKE POCKET

A. Using a utility knife, carefully cut out front stake pocket and remove plastic piece.



B. Place foam into front stake pocket.



2: INSTALLING SIDE RAIL

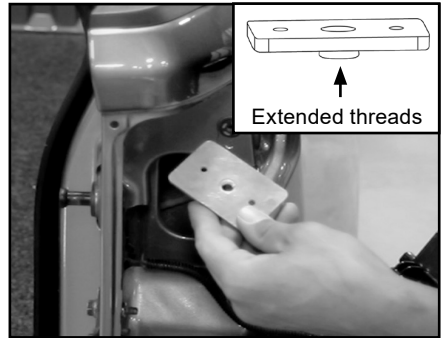
A. Place long bolt and flat washer through side rail slot and hole in bottom of stake pocket.



2: INSTALLING SIDE RAIL (Continued)

B. Remove rear taillight assembly and place clamp plate underneath stake pocket.

IMPORTANT: Ensure extended threads on clamp plate are toward box floor.



C. Thread long bolt into clamp plate.



D. Tighten long bolt from top of side rail.

E. Refer to standard instructions to install side rail to front stake pocket.

F. Repeat Steps 1-2 to install side rail on opposite side.

G. For remaining topper installation, refer to standard instructions.

