

FULL WIDTH TOW FLAP SPECIAL BRACKET INSTRUCTIONS



2020-ON JEEP GLADIATOR

Read and follow these special instructions along with the standard instructions carefully before installing or using this tow flap.

NOTICE TO INSTALLER: Even if familiar with product, read special instructions prior to installation as improvements may be made without notice. Always handle components with care. When done, these instructions must be given to the consumer.

NOTICE TO CONSUMER: Before using this product, read special instructions. Save these special instructions for future reference.

PREPARATION

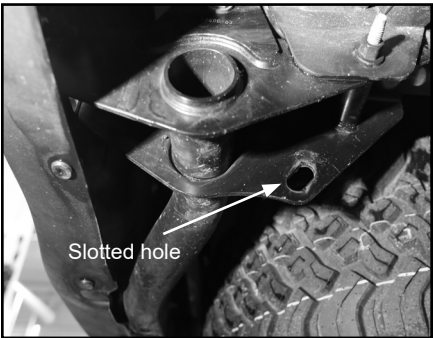
TOOLS NEEDED

- 9/16" Wrench
- Protective eyewear

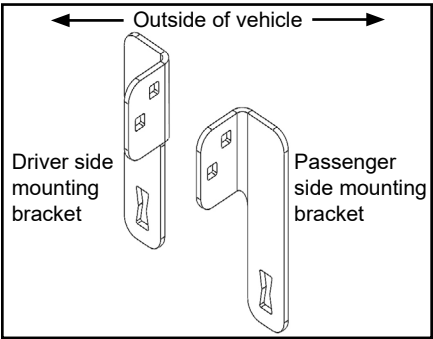
⚠ CAUTION: Over tightening hardware may damage components or truck.

1: INSTALLING MOUNTING BRACKETS

A. At rear bumper, locate slotted hole.



NOTE: Use proper orientation while installing brackets.



B. Insert carriage bolts into mounting bracket and through slotted hole. Secure with nylock flange nuts until snug, not completely tight.

NOTE: Nylock flange nuts will be fully tightened during tow flap installation.

C. Repeat Steps 1A-B to install mounting bracket on opposite side.

D. For remaining tow flap installation, refer to standard instructions.

