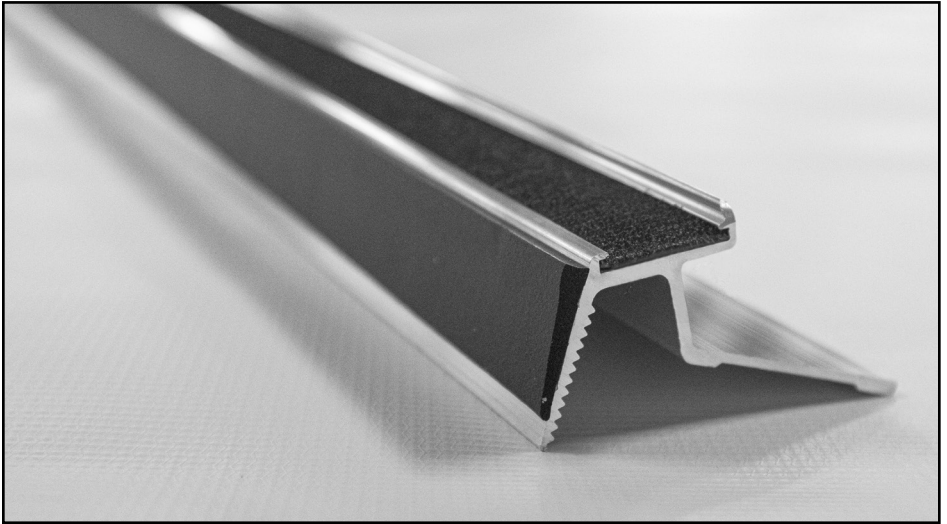


# SEAL REPLACEMENT INSTALLATION INSTRUCTIONS



**NOTICE TO INSTALLER:** Even if familiar with product, read instructions prior to installation as improvements may be made without notice. Always handle components with care. When done, these special instructions must be given to the consumer.

**NOTICE TO CONSUMER:** Before using this product, read instructions. Save these instructions for future reference.

# PREPARATION

## COMPONENTS

- Seal
- Alcohol pad

## TOOLS NEEDED

- Protective eyewear
- Scissors
- Scraper (optional)
- Adhesive removal wheel (optional)

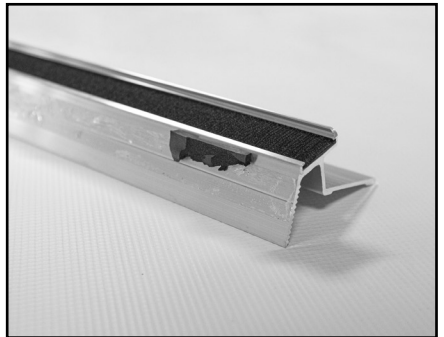
**NOTE:** Be aware there are different types of seals, the installation process is the same for each type. Hardware appearance may vary.

## 1: REMOVING OLD SEAL

A. Note seal's location and orientation then slowly remove seal.



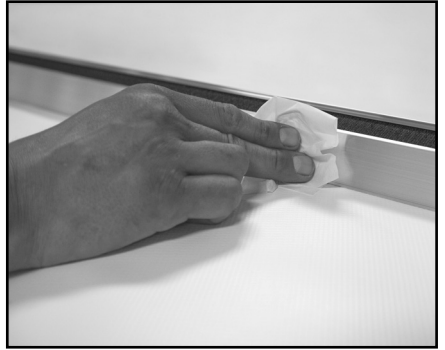
**NOTE:** In some cases, debris is left behind when removing the seal. Patiently use optional non-marring scraper or adhesive removal wheel to remove debris.



## 2: APPLYING NEW SEAL

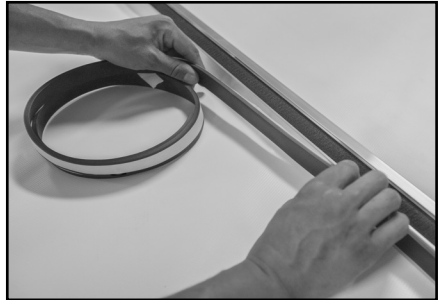
**NOTE:** For best adhesion, ensure air and surface temperatures are above 60° F.

A. Clean area with alcohol pad.



B. Starting at one end, peel protective backing as you go and carefully apply seal in previous location and orientation.

**⚠ CAUTION:** Take care to not stretch seal when applying.



C. Firmly press down on seal.

**NOTE:** If needed, trim excess seal flush.



