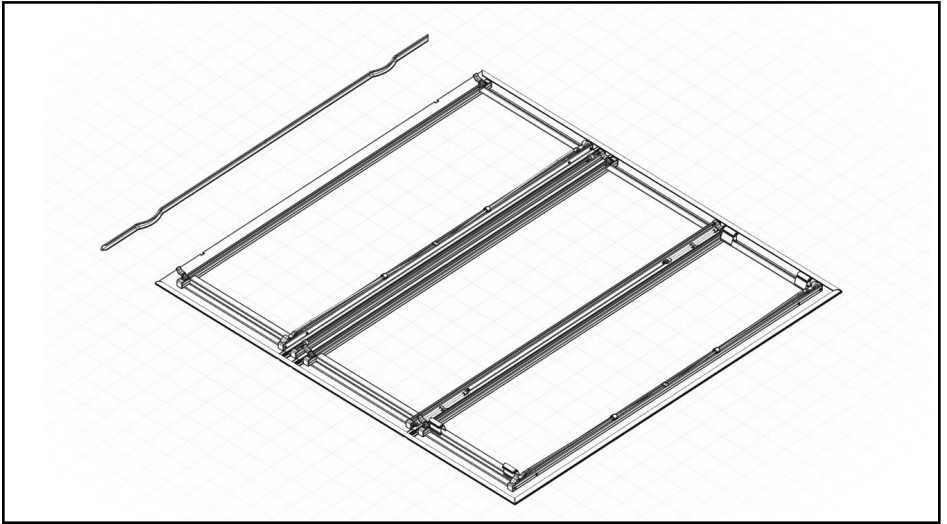


# HARD TRI-FOLD COVER FRONT SEAL REPLACEMENT INSTRUCTIONS



**NOTICE:** Use these instructions to replace the front seal on your hard tri-fold cover. Even if familiar with product, read instructions prior to use as improvements may be made without notice. Always handle components with care.

# PREPARATION

Unpack kit contents. The kit contains material to replace 1 front seal.

## CONTENTS

- (3) Adhesive remover wipes
- (3) Alcohol pads
- (1) Front seal
- (1) Scraper

## TOOLS NEEDED

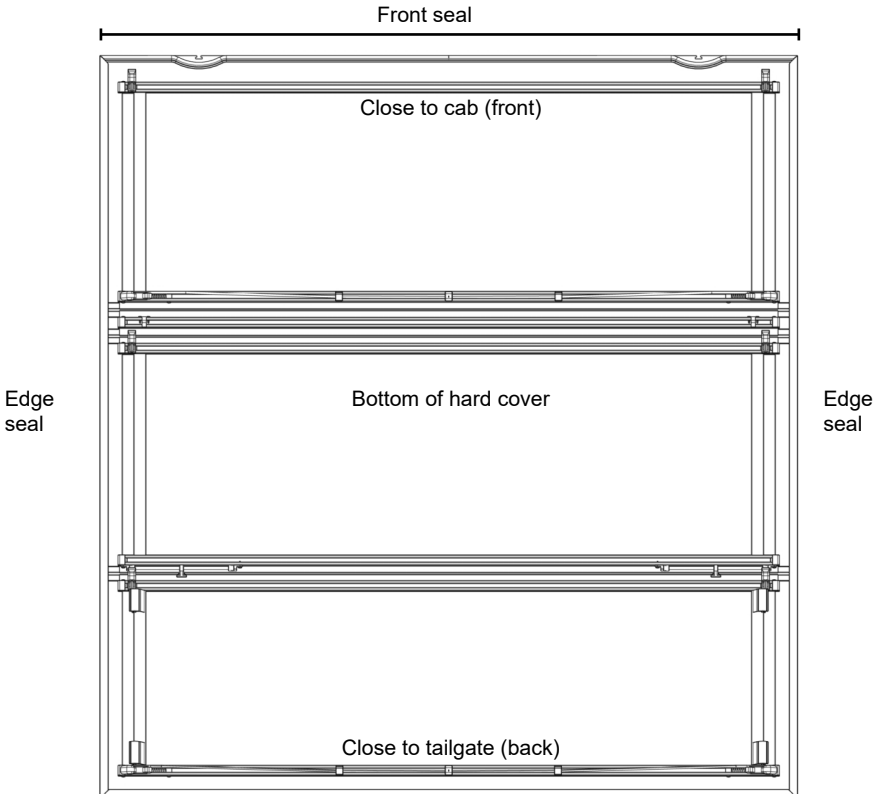
- Protective eyewear
- Scissors
- Adhesive removal wheel (optional)

**▲ CAUTION:** Before using adhesive remover, read and understand all directions, warnings and precautions on adhesive remover packaging.

**▲ WARNING:** Do not use or store adhesive remover near fire or flame. Use in well ventilated area. Avoid contact with eyes. Do not breathe vapor. Keep out of reach of children.

**NOTE:** Be aware there are different types of front seals, the installation process is the same for each type. Hardware appearance and components may vary.

# PARTS DIAGRAM - FRONT D SEAL IDENTIFICATION

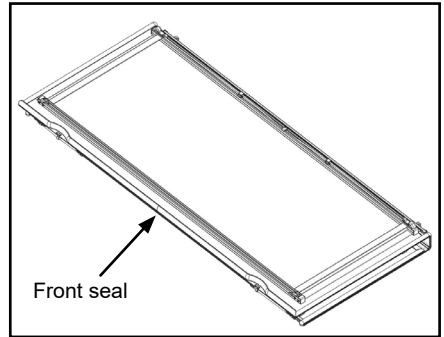


# 1: REMOVING OLD D SEAL

A. Clean and prepare flat work area. Place cloth, cardboard or tarp on work area to protect cover.

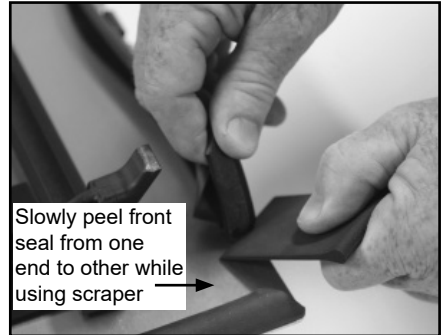
B. Follow standard instructions to close cover, secure with storage clips and then remove from vehicle.

C. Position folded cover on work area with front seal facing up.

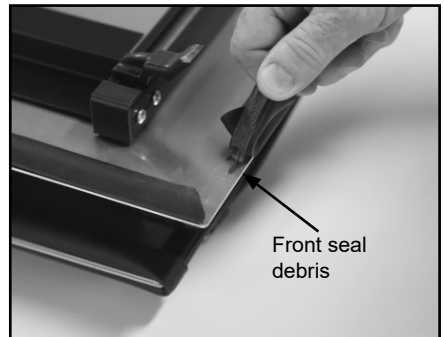


**NOTE:** Ensure work area accommodates folded cover length, width and weight.

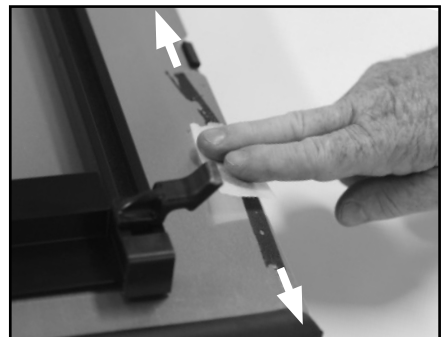
D. From one end of cover, slowly peel front seal from cover while using the scraper to assist in removal of the seal.



**NOTE:** In some cases, debris is left behind when removing the front seal. Patiently use included non-marring scraper or optional adhesive removal wheel to remove debris.

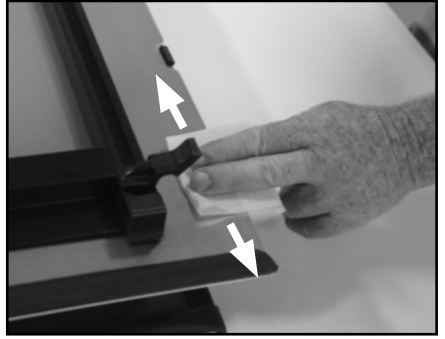


E. Use adhesive remover wipes to eliminate adhesive residue along the front of the cover.



## 2: APPLYING NEW D SEAL

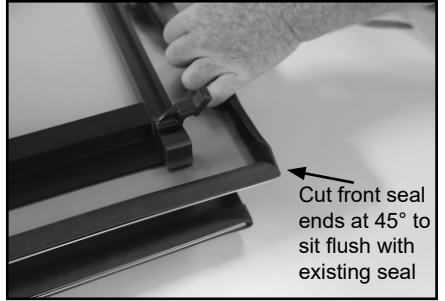
A. Clean front of cover with alcohol wipes.



B. At one end of hard cover, use existing seal as guide to cut front seal end to 45° angle.

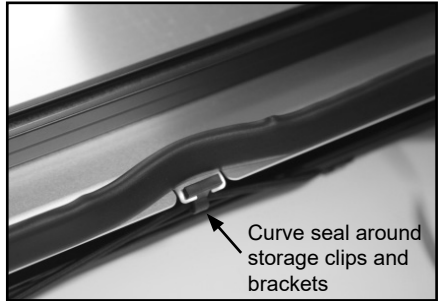
C. Peel backing as you go and carefully apply front seal flush across length of cover edge.

**⚠ CAUTION: Take care to not stretch front seal while applying it.**



D. Curve seal around storage clips and brackets.

E. If applicable, ensure seal does not contact cuts in cover near storage clips.



F. At opposite end, cut 45° angle to fit front seal end flush with existing seal.

G. Firmly press front seal down across the front of the cover.

