

JUMPER WIRE SPECIAL INSTRUCTIONS

Use these instructions to install a jumper wire for select John Deere models. Read and follow these instructions along with the standard instructions carefully before installing or using tarp system.

NOTICE TO INSTALLER: Even if familiar with hardware, read special instructions prior to installation as improvements may be made without notice. Always handle components with care. If you have questions or problems, call customer service. When done, these instructions must be given to the consumer.

NOTICE TO CONSUMER: Before using this product, read safety and maintenance sections of these special instructions. Save these instructions for future reference.

PREPARATION

COMPONENTS

- Jumper wire

TOOLS NEEDED

- Screwdriver

▲ CAUTION: Always disconnect power before servicing system or electrical components and refer to OEM documentation before installing.

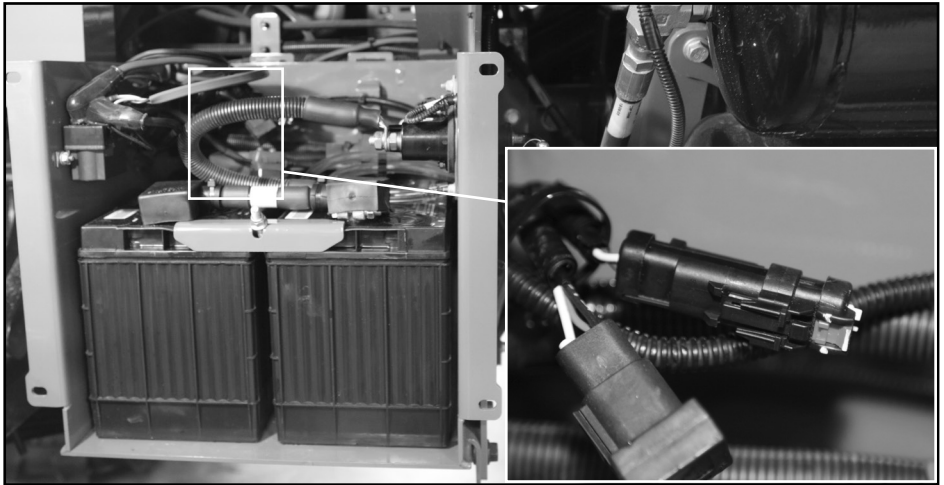
NOTE: Hardware appearance and components may vary.

Follow OEM instructions to power off machine and batteries then proceed to model specific section below.

JOHN DEERE AB485

A. For John Deere AB485, locate factory installed jumper wire on wire harness inside battery box.

B. Continue to Step 1 for remaining installation.



JOHN DEERE R4030, R4038 AND R4045

A. For John Deere R4030, R4038 and R4045, locate factory installed jumper wire on rear frame.

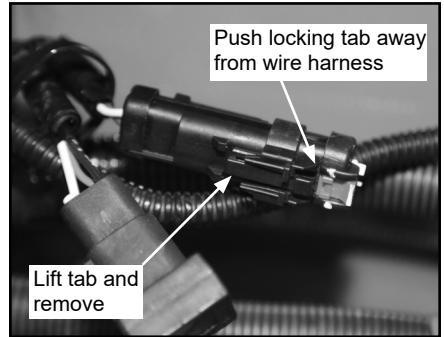
B. Continue to Step 1 for remaining installation.



1: INSTALLING JUMPER WIRE

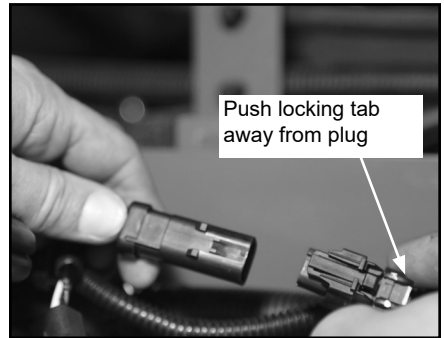
A. Locate factory installed jumper terminal and push red locking tab away from wire harness.

B. Lift tab and pull factory jumper terminal from socket to remove plug.

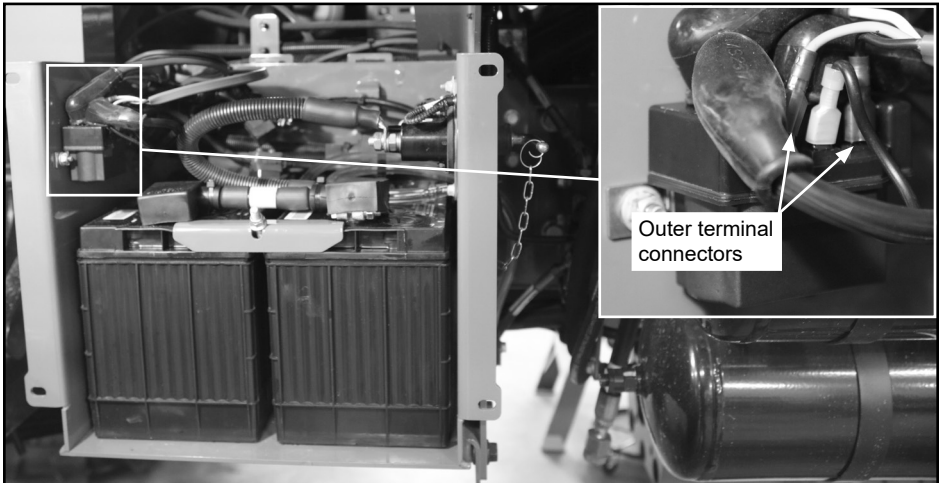


C. Push new jumper cable's locking tab away from plug.

D. Plug in jumper to wire harness then push red locking tab toward wire harness.

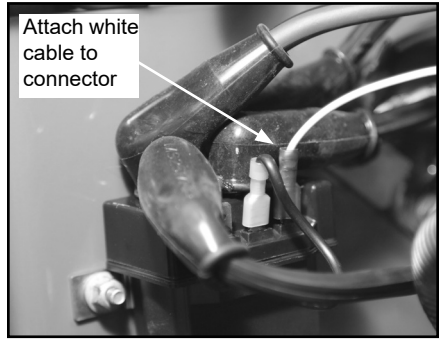


E. Locate terminal block and remove outer connectors if wired through other switch.

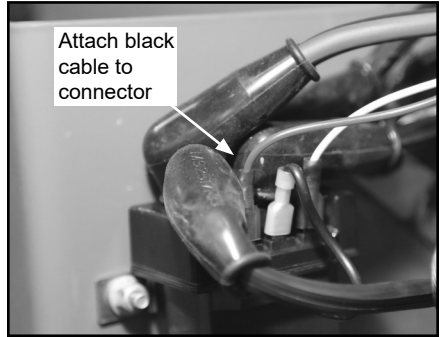


1: INSTALLING JUMPER WIRE (Continued)

F. Attach white cable to connector on terminal block closest to inside of box.



G. Attach black cable to connector on terminal block closest to outside of box.



H. Follow OEM instructions to power on battery supply and machine then test open and close tarp functions.

▲ CAUTION: Ensure people and objects are clear of tarp system before and during operation.

NOTE: If tarp operates in opposite direction of screen commands, cable connections on terminal block are reversed. Swap outer cable connections on terminal block and try again.

A. Reinstall battery housing cover.

NOTE: Periodically check jumper wire connections are secure.