

ROLL UP TRUCK BOX COVER SPECIAL BOLT ON SIDE RAIL INSTRUCTIONS



2017-ON HONDA RIDGELINE

Read and follow these special instructions along with the standard instructions carefully before installing or using this cover.

NOTICE TO INSTALLER: Even if familiar with product, read special instructions prior to installation as improvements may be made without notice. Always handle components with care. When done, these special instructions must be given to the consumer.

NOTICE TO CONSUMER: Before using this product, read special instructions. Save these special instructions for future reference.

NOTICE TO INSTALLER/CONSUMER: These instructions supersede the side rail installation step found in the standard instructions. After side rails are installed, resume standard instructions.

PREPARATION

IMPORTANT: This truck is equipped with a trunk-like lid on the box floor. The lid remains functional, however, restricted from fully opening. Avoid forcing the lid beyond its limit.

TOOLS NEEDED

- (1) 1/2" Wrench
- (1) 10 mm Wrench
- (1) Protective eyewear
- (1) T-30 Torx wrench

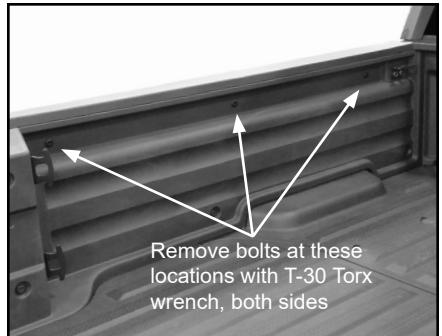
⚠ CAUTION: Over torquing hardware may damage components. Do not use impact tools.

NOTE: For best adhesion, ensure air and surface temperatures are above 60° F.

1. REMOVING EXISTING HARDWARE

A. Remove 3 bolts along the upper portion of each box side wall with a T-30 Torx wrench.

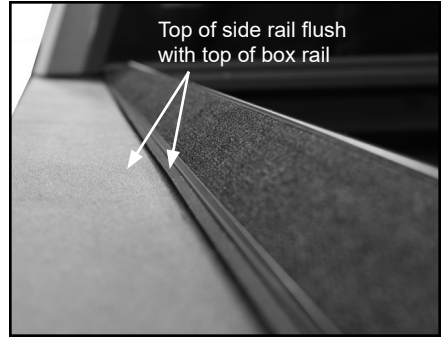
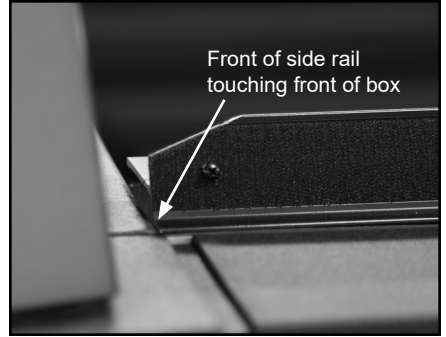
NOTE: These bolts will be replaced with new hardware in Step 3. Installers should return these bolts to the owner.



2. INSTALLING SIDE RAILS

A. Test fit side rail with weather seal against inside lip of box. Push side rail forward until it touches front of box and adjust side rail flush with top of box. Refer to standard instructions for correct height and position of side rail.

NOTE: Do not peel paper backing off of weather seal at this time.



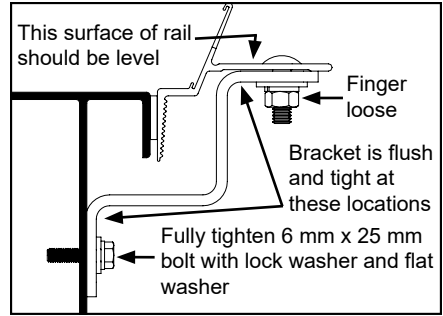
B. Clean inside edge of box rail with alcohol pad. Peel protective tape from seal. Position side rail tight to front of box and flush with box rail. Working from front of box to rear, adhere side rail to inside edge of box rail.

NOTE: Use excess ELEMENT SEAL™ Gasket to fill any additional holes/gaps.



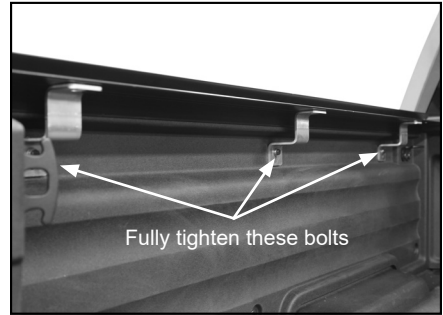
3. INSTALLING SIDE RAILS AND BRACKETS

A. Starting at front, position front bracket as illustrated (narrow slot toward box wall, wide slot toward side rail). Secure bracket to side of box with a 6 mm x 25 mm bolt, 1/4" lock washer and 1/4" flat washer. While side rail is level and at correct height, ensure bracket is flush and tight with box wall and side rail. Fully tighten bottom bolt.



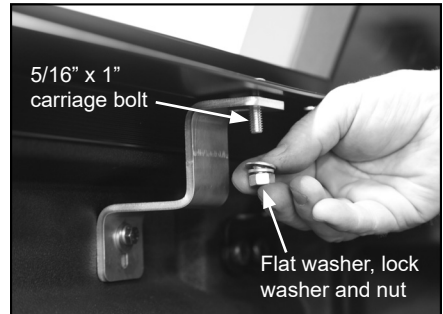
B. Install brackets at middle and rear of side rail. While side rail is level and correct height, ensure bracket is flush and tight with box wall and side rail.

NOTE: Install brackets from front to rear of box. Ensure all bottom bolts are fully tightened.



4. INSTALLING SIDE RAILS TO BRACKETS

A. Align slot in bracket with slot in side rail (slots allow for adjustment). Secure bracket to side rail with 5/16" x 1" carriage bolt, flat washer, lock washer and nut. **Leave finger tight for now.**



B. Push side rail tight against box rail to compress seal. Ensure entire seal is completely compressed then fully tighten nut.

Repeat process to install side rail on opposite side. When done, ensure all bracket bolts are fully tightened.

C. For remaining cover installation, refer to standard instructions.

