

Roller Guide Replacement Kit



INSTALLER: These instructions must be given to the consumer.

CONSUMER: Save this manual for future reference.

READ AND FOLLOW THESE INSTRUCTIONS CAREFULLY BEFORE INSTALLING.

Actual parts may vary from those shown in this booklet.

PREPARATION

TOOLS NEEDED

Protective eyewear
Marking pencil
Step ladders or scaffolding
Drill with 5/16" drill bit

Tape measure
Socket wrench with 9/16" socket
7/32" Allen wrench
Reciprocating saw / hacksaw

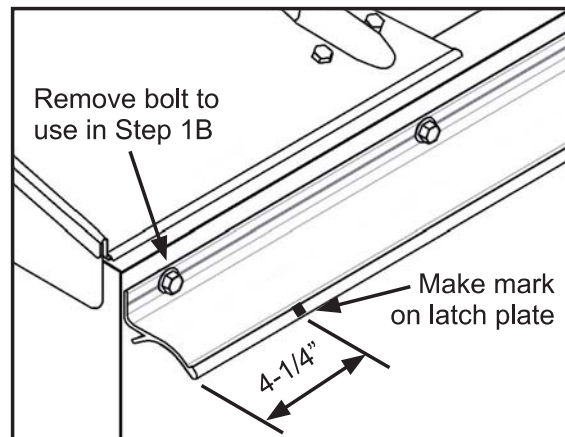


CAUTION: To avoid galling of stainless steel hardware, use anti-galling spray, grease or lubricant on threads and avoid high speed when fastening. Do not use impact tools for stainless steel hardware.

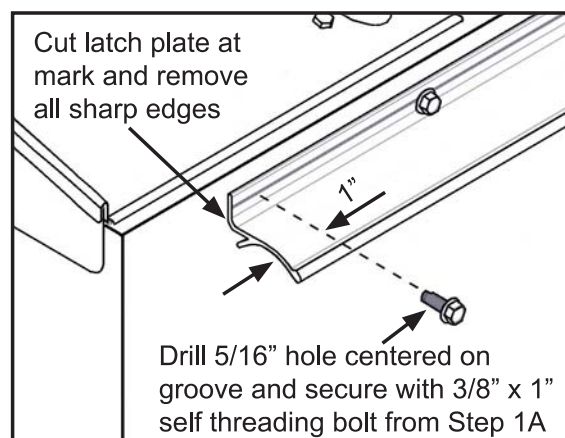
1: TRIM EXISTING LATCH PLATE

A. Latch plate will need to be shortened to accommodate the new roller guides. Measure 4-1/4" in from end of latch plate and make mark.

IMPORTANT: Ensure tarp will still rest on latch plate.



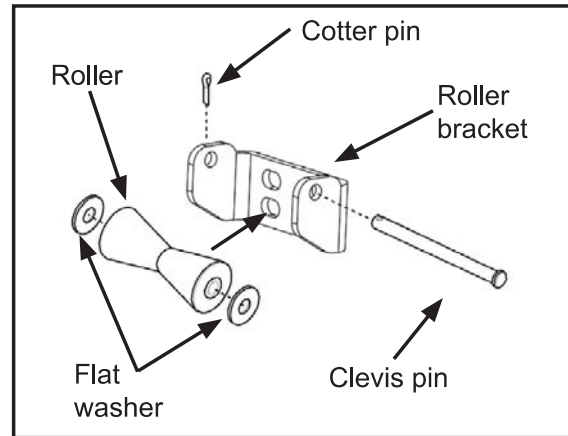
B. Loosen latch plate from box and make square cut on latch plate at mark made in previous step. Remove all sharp edges and burrs to protect tarp. Refasten latch plate to box. Measure in 1" from cut end and use small groove line on latch plate as center point to drill 5/16" hole and fasten with 3/8" x 1" self threading bolt from Step 1A.



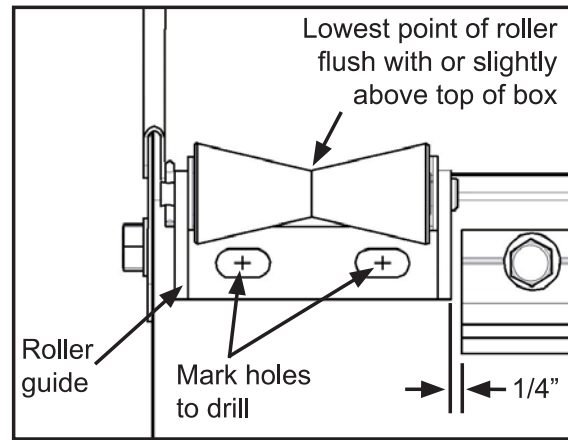
2: ASSEMBLE AND PLACE ROLLER BRACKET

A. Place roller with a flat washer on each side into the roller bracket. Line up holes and insert clevis pin through bracket, washers and roller. Secure clevis pin with a cotter pin.

NOTE: Cotter pin should always be away from the tarp.

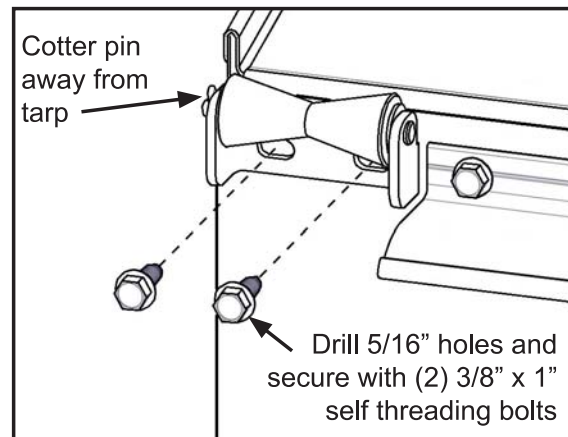


B. Position the roller guide 1/4" from cut end of latch plate. The lowest point of roller should be flush with or slightly above the top surface of the trailer. Roller bracket should not interfere with end caps. Mark the bracket holes.



C. Drill 5/16" holes at each mark and secure roller bracket with (2) 3/8" x 1" self threading bolts. For stainless steel kits, use self threading bolts to cut threads into 5/16" holes, then turn 3/8" x 1" stainless steel bolts with stainless steel washers and lock washers.

IMPORTANT: Make sure cotter pin is away from tarp.



D. Driveline cord needs to run near vertical (+/- 1/2"). Existing spring box may need to be moved in order to achieve this. Relocate spring box so notches on spring box align with lowest point on roller.

Repeat Steps 1 and 2 for roller guide at rear of trailer.

