



REPLACING DRIVE LINE CORD

Use these instructions to replace your drive line cord.

NOTICE TO INSTALLER: Even if familiar with product, read instructions prior to installation as improvements may be made without notice. Always handle components with care. If you have questions or problems, call customer service. When done, these instructions must be given to the consumer.

NOTICE TO CONSUMER: Before using this product, read instructions. Save these instructions for future reference.

PREPARATION

Unroll tarp to hang down on the latch plate side. Disconnect power wires from battery. Disconnect power wires from motor terminals. Pull vinyl cap off end of tube to expose roll tube groove (no need to remove motor). Clean groove in tube.

TOOLS NEEDED

- Locking pliers
- Marking pen
- Utility knife
- Electrical tape
- Protective eyewear

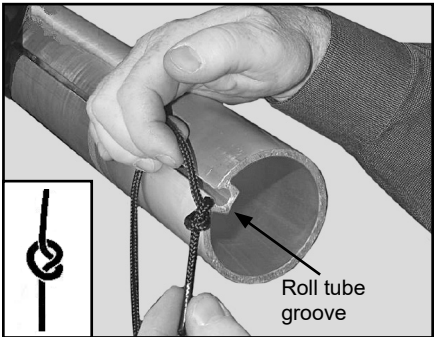
NOTE: Hardware appearance and components may vary.

SAFETY INFORMATION

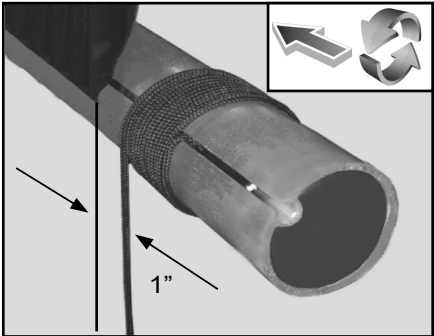
- Always exercise caution when using a utility knife.
- Always cut away from yourself and others.

1: WRAPPING DRIVE LINE CORD ON ROLL TUBE

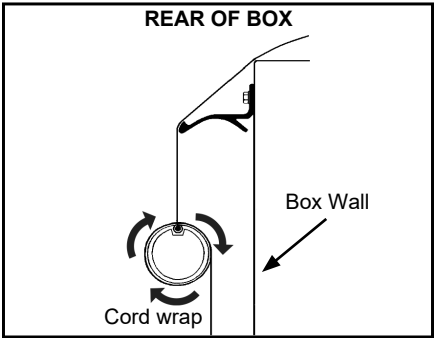
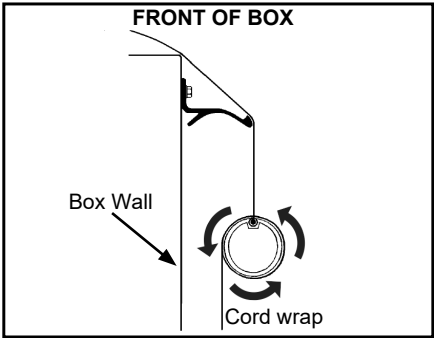
A. At front of box, tie loose overhand knot in one end of drive line cord. Insert loose knot into groove on roll tube.



B. Slide knot over and pull tight. Wrap drive line cord around tube from outside going inward toward tarp, always toward box wall.



C. Wrap drive line cord 12 full wraps, let excess hang down. Cord must be at least 1" away from tarp.

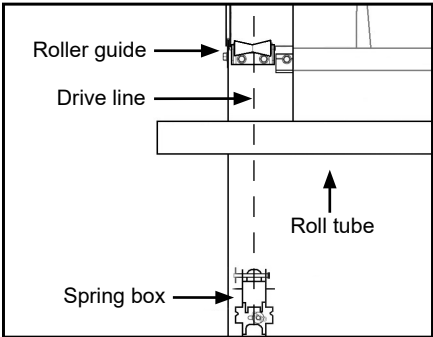


1: WRAPPING DRIVE LINE CORD ON ROLL TUBE

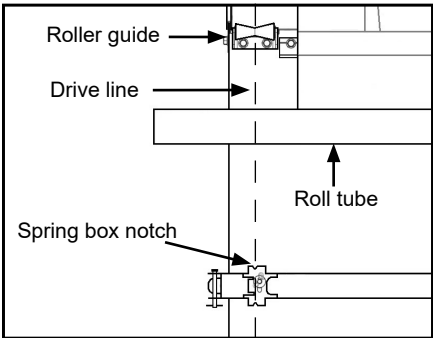
(Continued)

Perform one of the following depending on spring box orientation:

Vertical Spring Box: Ensure center of roller guide aligns with center of spring box, drive line cord centers on roller guide and runs near vertical. Adjust drive line cord on roll tube if needed.



Horizontal Spring Box: Ensure center of roller guide aligns with center of spring box notch, drive line cord centers on roller guide and runs near vertical aligning with notches at end of spring box. Adjust drive line cord on roll tube if needed.

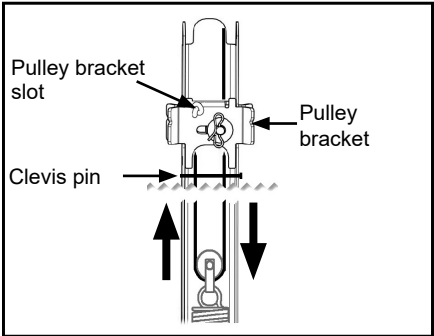


2: ATTACHING DRIVE LINE CORD TO SPRING

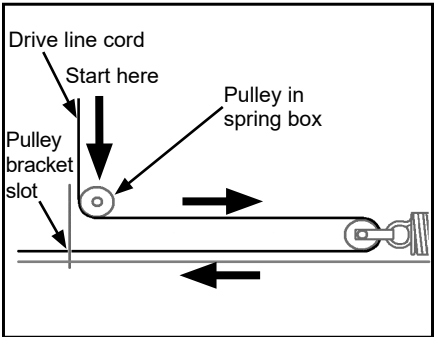
A. Open or remove doors on spring box.

Perform one of the following depending on spring box orientation:

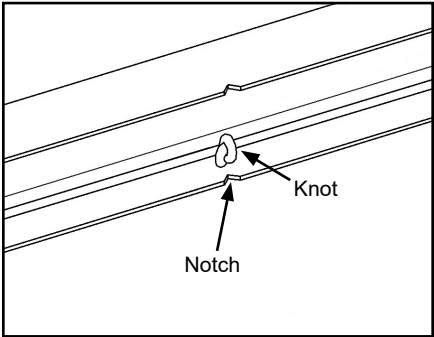
Vertical Spring Box: Route drive line behind pulley bracket and clevis pin at end of spring box, over and around pulley on end of tension spring and back toward pulley bracket slot at end of spring box.



Horizontal Spring Box: Route drive line around pulley and in front of clevis pin at end of spring box, over and around pulley on end of tension spring and back toward pulley bracket slot at end of spring box.



B. Pull cord tight and tie knot in line with “V” notch on spring box.

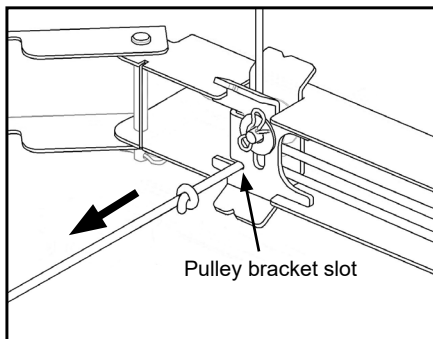


2: ATTACHING DRIVE LINE CORD TO SPRING

(Continued)

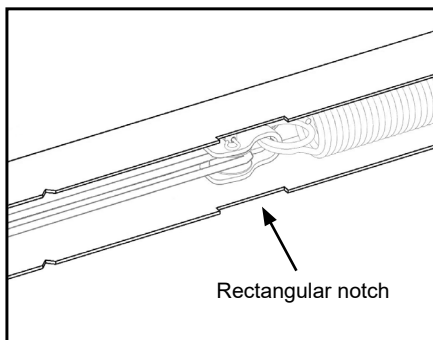
C. Pull cord through pulley bracket, stretching spring and place knot in pulley bracket slot.

NOTE: Ensure drive lines are tensioned equally at front and rear of tarp.



D. Reconnect power. Check spring tension during first open and close cycle of tarp. Spring is properly tensioned when pulley settles and approximately aligns with rectangular notch on spring box. Make adjustments if needed.

E. With spring tensioned, wrap electrical tape around cord 2" from knot, then cut excess cord.



F. Attach or close doors on spring box, reinsert securing hardware and test tarp operation.

⚠ CAUTION: Keep doors closed with pin in place while operating.

