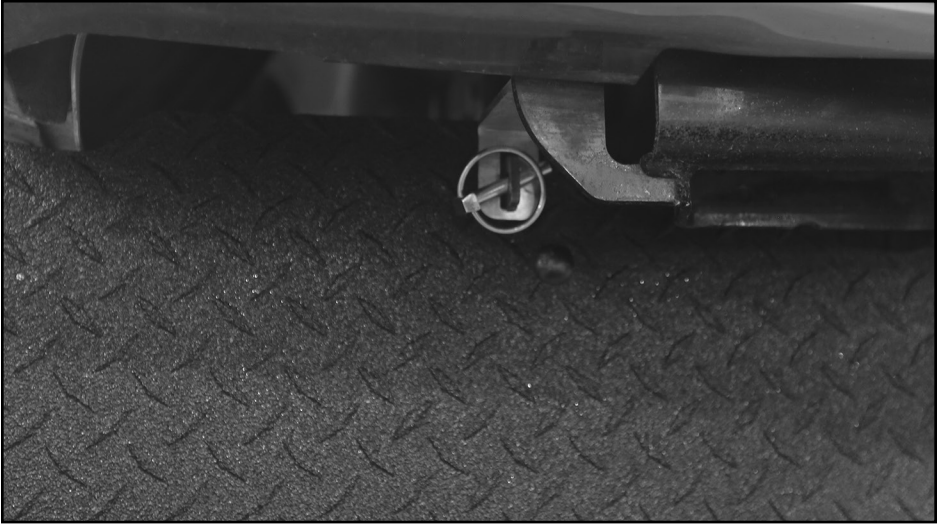


FULL WIDTH TOW FLAP SPECIAL BRACKET INSTRUCTIONS



07-14 CHEVY/GMC 2500, 3500

Read and follow these special instructions along with the standard instructions carefully before installing or using this tow flap.

NOTICE TO INSTALLER: Even if familiar with product, read special instructions prior to installation as improvements may be made without notice. Always handle components with care. When done, these instructions must be given to the consumer.

NOTICE TO CONSUMER: Before using this product, read special instructions. Save these special instructions for future reference.

PREPARATION

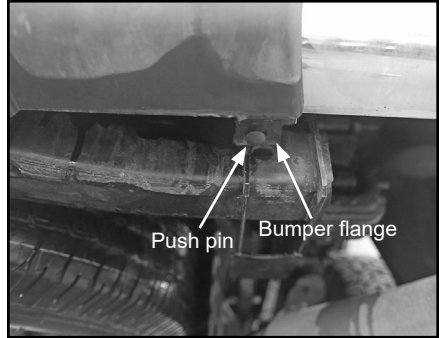
TOOLS NEEDED

- Ratchet with 1/2" socket

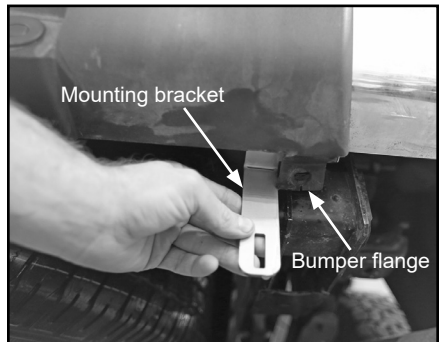
⚠ CAUTION: Over tightening hardware may damage components or truck.

1: INSTALLING MOUNTING BRACKETS

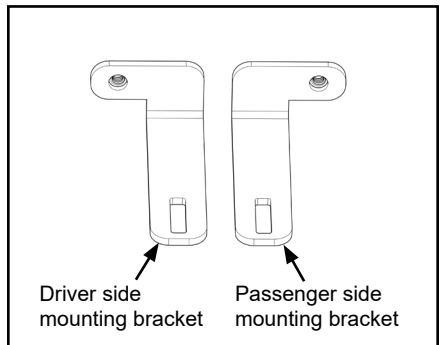
A. At rear of box, remove indicated push pin from bumper flange.



B. Place mounting bracket on top of bumper flange. Align hole in mounting bracket with hole in bumper flange.



NOTE: Mounting brackets are side specific.



1: INSTALLING MOUNTING BRACKETS (Continued)

C. Insert bolt through bumper flange and mounting bracket holes. Secure with nut.

D. Tighten bolt with ratchet and 1/2" socket until snug, but not completely tight.

NOTE: Bolt will be fully tightened during tow flap installation.

E. Repeat Steps 1A-D to install mounting bracket on opposite side.

F. **For remaining tow flap installation, refer to standard instructions.**

