

FULL WIDTH TOW FLAP SPECIAL BRACKET INSTRUCTIONS



2014-2021 TOYOTA TUNDRA

Read and follow these special instructions along with the standard instructions carefully before installing or using this tow flap.

NOTICE TO INSTALLER: Even if familiar with product, read special instructions prior to installation as improvements may be made without notice. Always handle components with care. When done, these instructions must be given to the consumer.

NOTICE TO CONSUMER: Before using this product, read special instructions. Save these special instructions for future reference.

PREPARATION

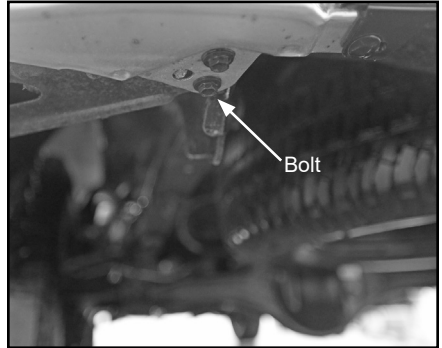
TOOLS NEEDED

- Ratchet with 12 mm socket
- Protective eyewear

▲ CAUTION: Over tightening hardware may damage components or truck.

1: INSTALLING MOUNTING BRACKETS

A. At rear bumper, remove indicated bolt with ratchet and 12 mm socket. Retain bolt for reinstall.

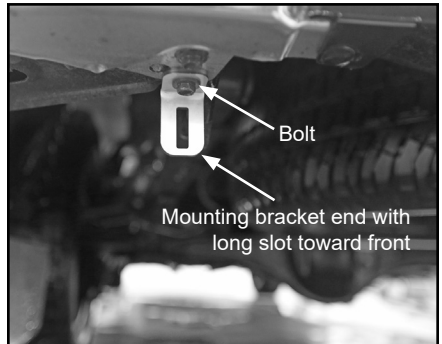


B. Insert bolt through round hole in mounting bracket.

C. Position mounting bracket end with long slot toward front of box and reinsert bolt into bolt hole at rear of bumper.

D. Tighten bolt with ratchet and 12 mm socket until snug, but not completely tight.

NOTE: Bolt will be fully tightened during tow flap installation.



E. Repeat Steps 1A-D to install mounting bracket on opposite side.

F. For remaining tow flap installation, refer to standard instructions.

