

JUMPER WIRE INSTRUCTIONS

Use these instructions to install a jumper wire for select John Deere models. Read and follow these instructions along with the standard instructions carefully before installing or using tarp system.

NOTICE TO INSTALLER: Even if familiar with product, read instructions prior to installation as improvements may be made without notice. Always handle components with care. If you have questions or problems, call customer service. When done, these instructions must be given to the consumer.

NOTICE TO CONSUMER: Before using this product, read safety and maintenance sections of these instructions. Save these instructions for future reference.

PREPARATION

Follow OEM instructions to power off machine and batteries then proceed to model specific section below.

TOOLS NEEDED

- Screwdriver (optional)

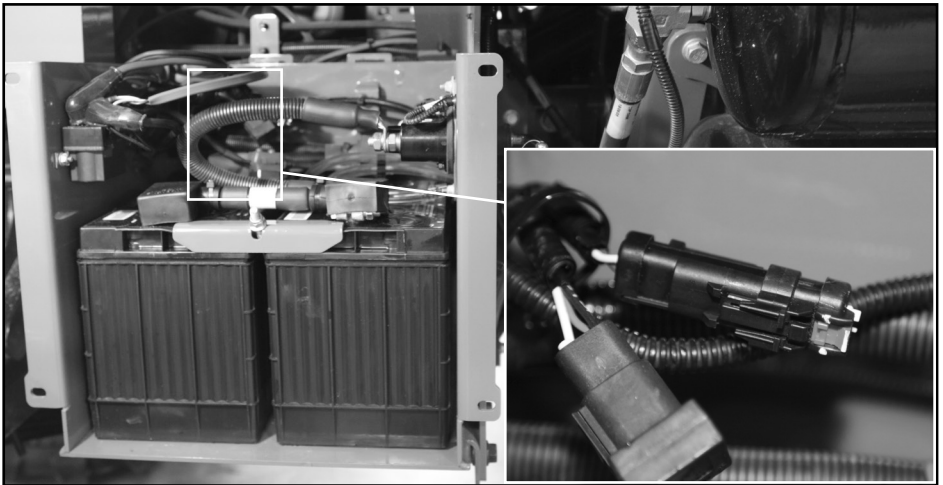
⚠ CAUTION: Always disconnect power before servicing system or electrical components and refer to OEM documentation before installing.

NOTE: Hardware appearance and components may vary.

JOHN DEERE AB485

A. Locate factory installed jumper wire on wire harness inside battery box.

B. Continue to Step 1 for installation.



JOHN DEERE R4030, R4038 AND R4045

A. Locate factory installed jumper wire on rear frame.

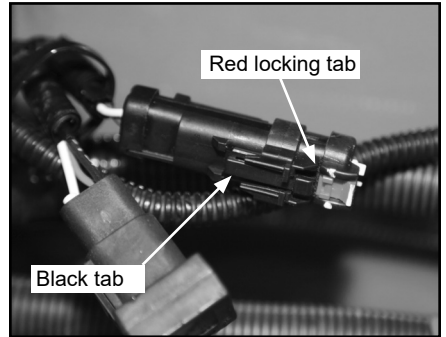
B. Continue to Step 1 for installation.



1: INSTALLING JUMPER WIRE

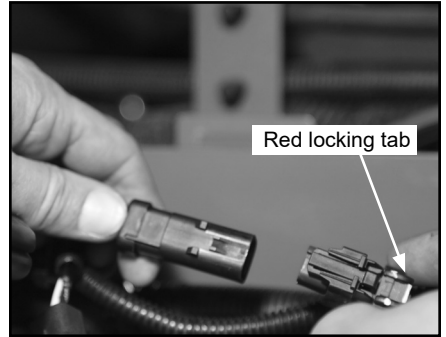
A. Locate factory installed jumper terminal and push red locking tab away from wire harness.

B. Lift black tab and pull factory jumper terminal from socket to remove plug.

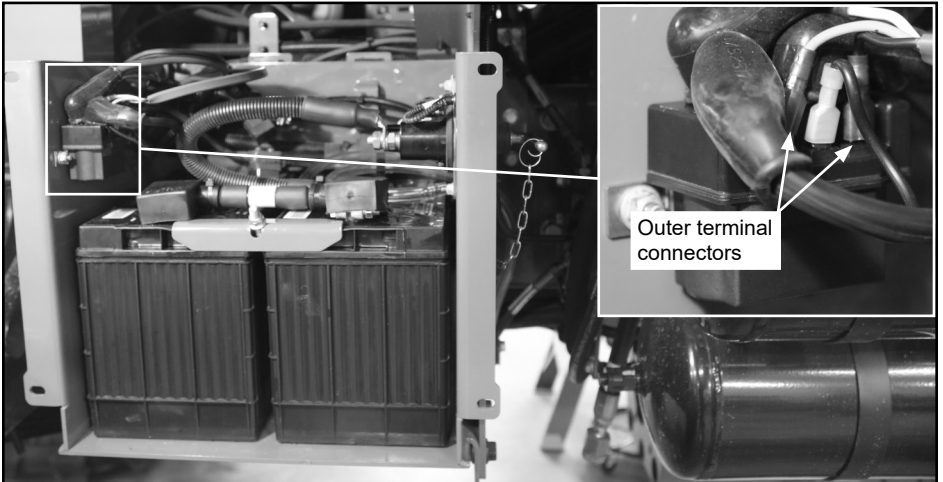


C. Push new jumper cable's red locking tab away from plug.

D. Plug in jumper to wire harness, then push red locking tab toward wire harness.

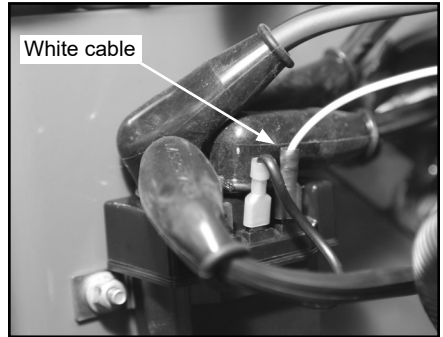


E. Locate terminal block and remove outer connectors if wired through other switch.

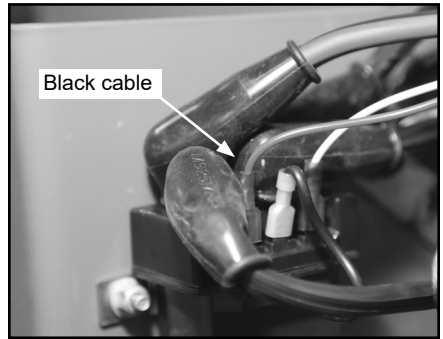


1: INSTALLING JUMPER WIRE (Continued)

F. Attach white cable to connector on terminal block closest to inside of box.



G. Attach black cable to connector on terminal block closest to outside of box.



▲ CAUTION: Ensure people and objects are clear of tarp system before and during operation.

H. Follow OEM instructions to power on battery supply and machine, then test open and close tarp functions.

TIP: To operate tarp using cab monitor:

1. From Menu screen, under Machine Settings, select Dry Application Systems
2. Press Down button
3. Select Roll Tarp
4. Press and hold Open button to open tarp
5. Press and hold Close button to close tarp

NOTE: If tarp operates in opposite direction of screen commands, cable connections on terminal block are reversed. Swap outer cable connections on terminal block and try again.

I. Reinstall battery housing cover.

NOTE: Periodically check jumper wire connections are secure.