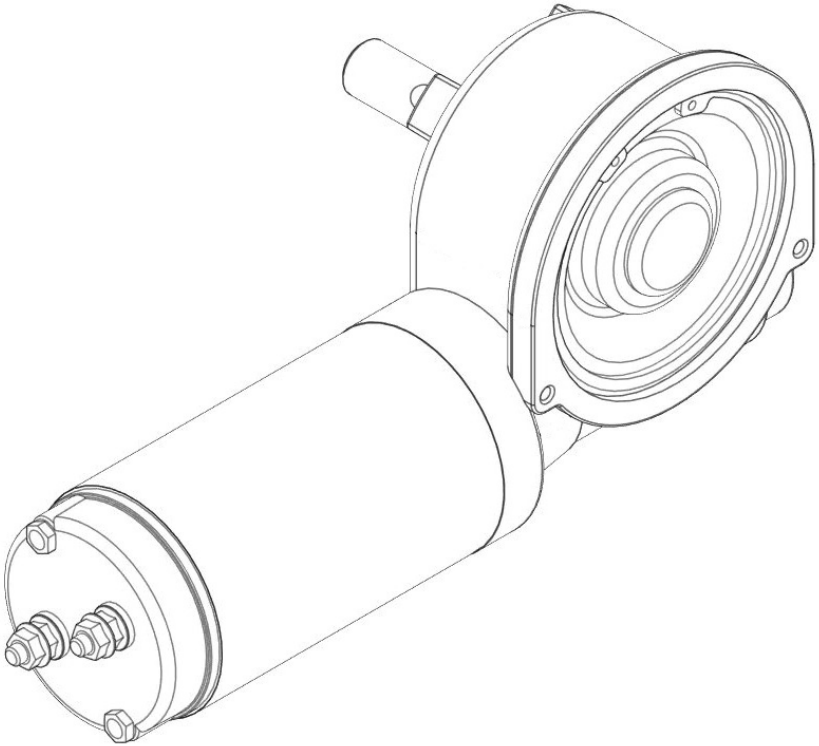




# Electric Motor Replacement Kit



## **READ ALL INSTRUCTIONS CAREFULLY BEFORE INSTALLING**

Actual parts may vary from those shown in this booklet.

Use the following instructions to replace the motor for your electric tarping system. Use caution while replacing the motor to ensure components are not damaged.

*Tested. Trusted. Guaranteed.*

## PREPARATION

### TOOLS & EQUIPMENT

Most installations will require use of all these items

1. Protective eyewear
2. Electrical tape
3. 3/8" wrench
4. Torque wrench



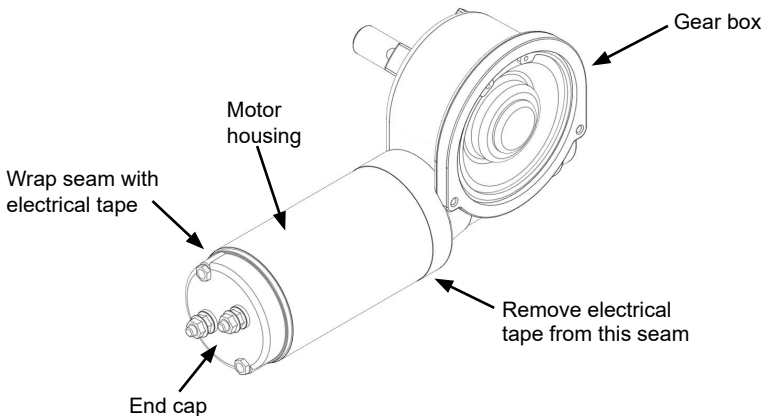
**CAUTION: Over torquing of hardware may damage motor. Do not use impact tools.**



**CAUTION: Avoid direct pressure washer spray to electric motor and motor connections.**

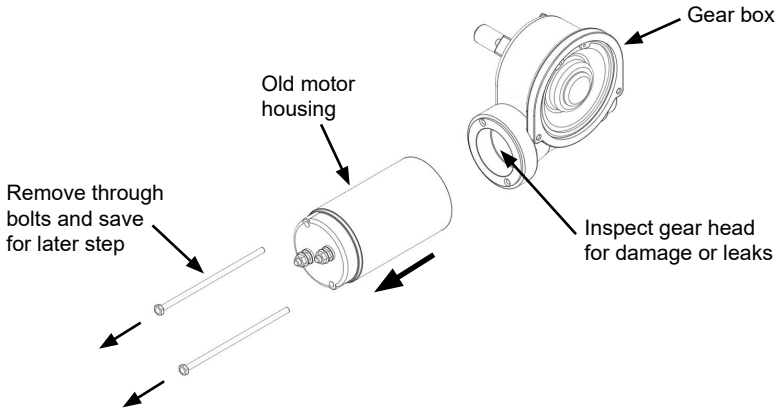
### 1: PREPARE MOTOR ASSEMBLY

Some motors will have the seams of the motor wrapped with electrical tape. If seams are taped, remove the tape along the seam between the gear box and the motor housing. Make sure to keep the seam between the motor housing and the end cap taped, to keep brushes in place during disassembly. If the motor does not have the seams taped, wrap the seam between the motor housing and the end cap with electrical tape.



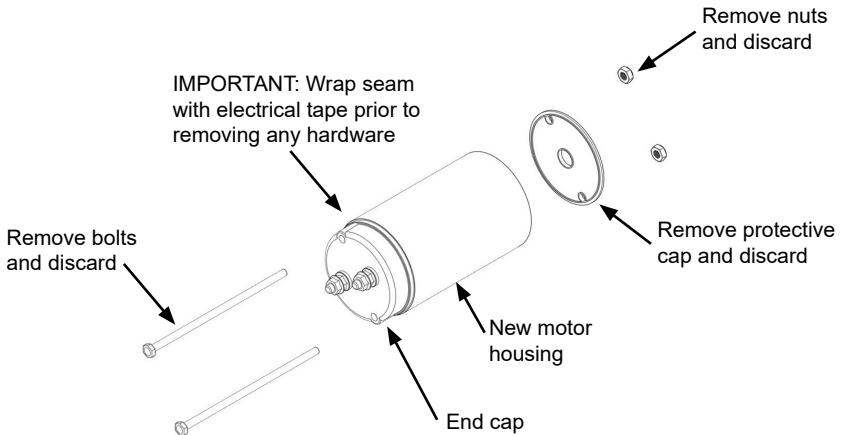
## 2: REMOVE EXISTING MOTOR

Using a 3/8" wrench, remove through bolts that secure end cap and motor housing to gear box, save for Step 4. Remove old motor housing from gear box. Inspect gear head for damage or leaks. Replace entire motor assembly if needed.



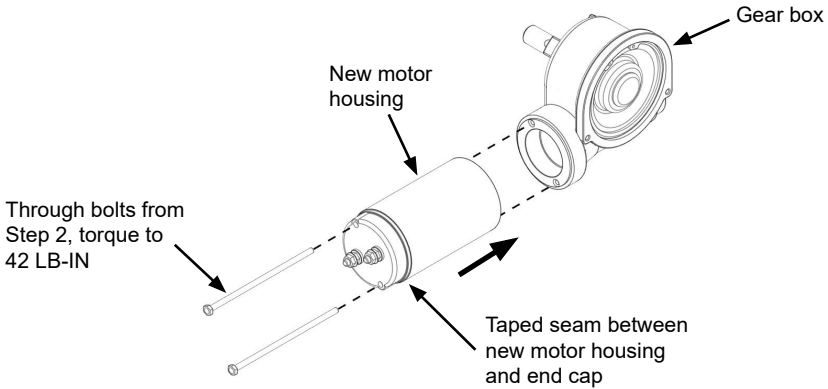
## 3: PREPARE NEW MOTOR

**IMPORTANT:** Wrap seam between end cap and motor housing with electrical tape prior to removing any hardware. Once seam is wrapped, remove nuts, bolts and protective cap and discard.



## 4: INSTALLING NEW MOTOR

Make sure seam between new motor housing and end cap is wrapped with electrical tape, then align new motor with gear box and secure with through bolts removed in Step 2. Torque to 42 LB-IN.



## 5: WRAP SEAM WITH ELECTRICAL TAPE

Use electrical tape to tape seam between motor housing and gear box.

